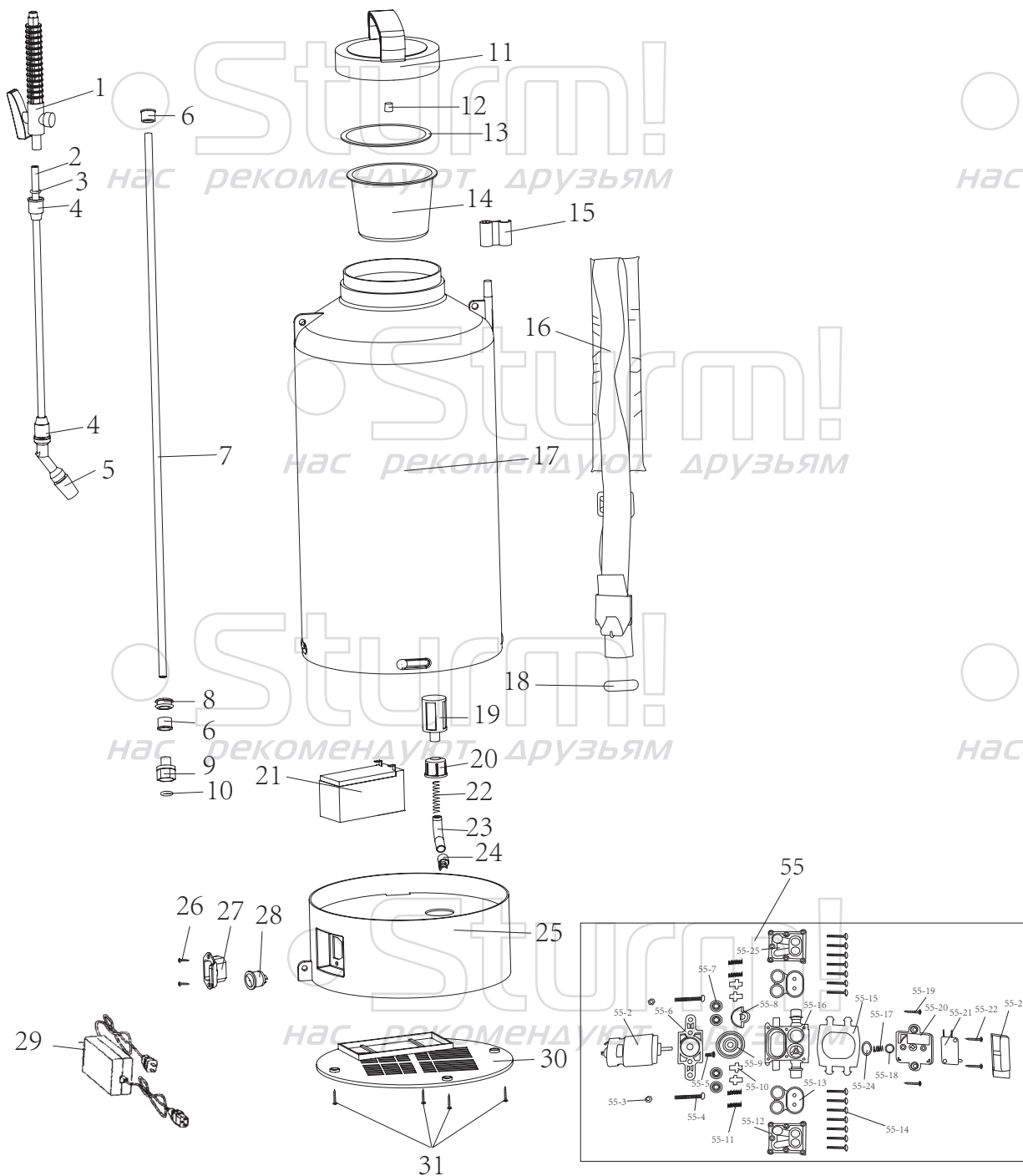


GS8210B



NO.	DESCRIPTION	NO.	DESCRIPTION
1	Trigger	29	charger
2	spray rod	30	Base plate
3	seal ring	31	Screw
4	nut for spray rod	55	Mini Pump
5	nozzle	55-2	Dc motor
6	Hose nut	55-3	nut
7	Hose	55-4	Screw
8	Rubber ring	55-5	Screw
9	outlets connection	55-6	Support bracket
10	seal ring	55-7	Valve seat
11	cap	55-8	Eccentric wheel
12	Intake valve	55-9	bearing
13	gasket ring	55-10	valve core
14	Filter	55-11	Spring
15	spray gun holder	55-12	Pump body cover
16	Straps	55-13	Pump membrane
17	Tank	55-14	Screw
18	pin	55-15	connetion rod
19	Filter	55-16	Pump body
20	Water inlet nut	55-17	Spring
21	12V,1.3AH Battery	55-18	spacer
22	Spring	55-19	Screw
23	Transparent hose	55-20	Pump body roof
24	Clamp	55-21	Switch
25	Bottom cover	55-22	Screw
26	Screw	55-23	Switch cover
27	Charger plug	55-24	Rubber ring
28	Switch	55-25	Pump body under cover

RU-ST20171010